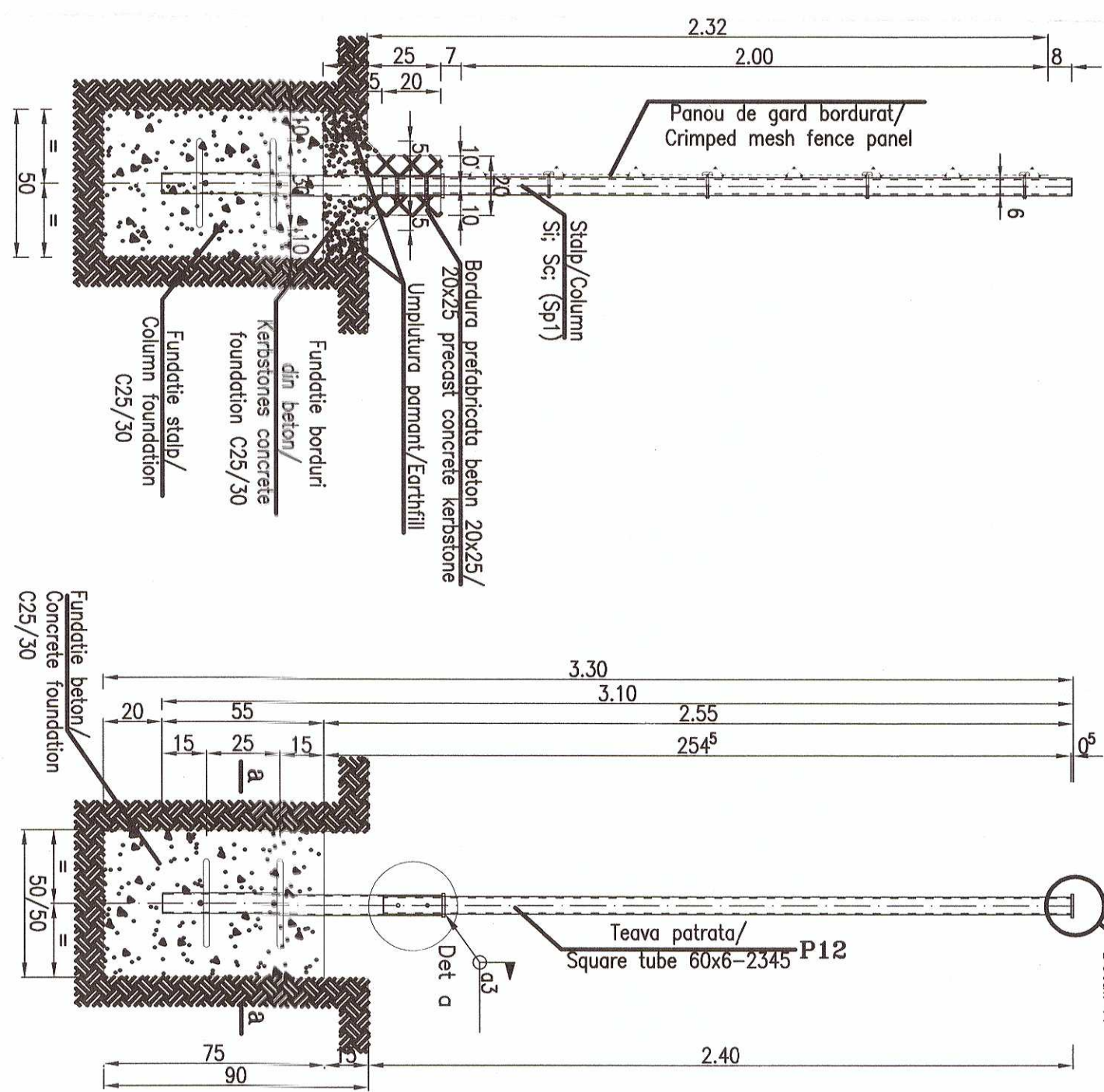
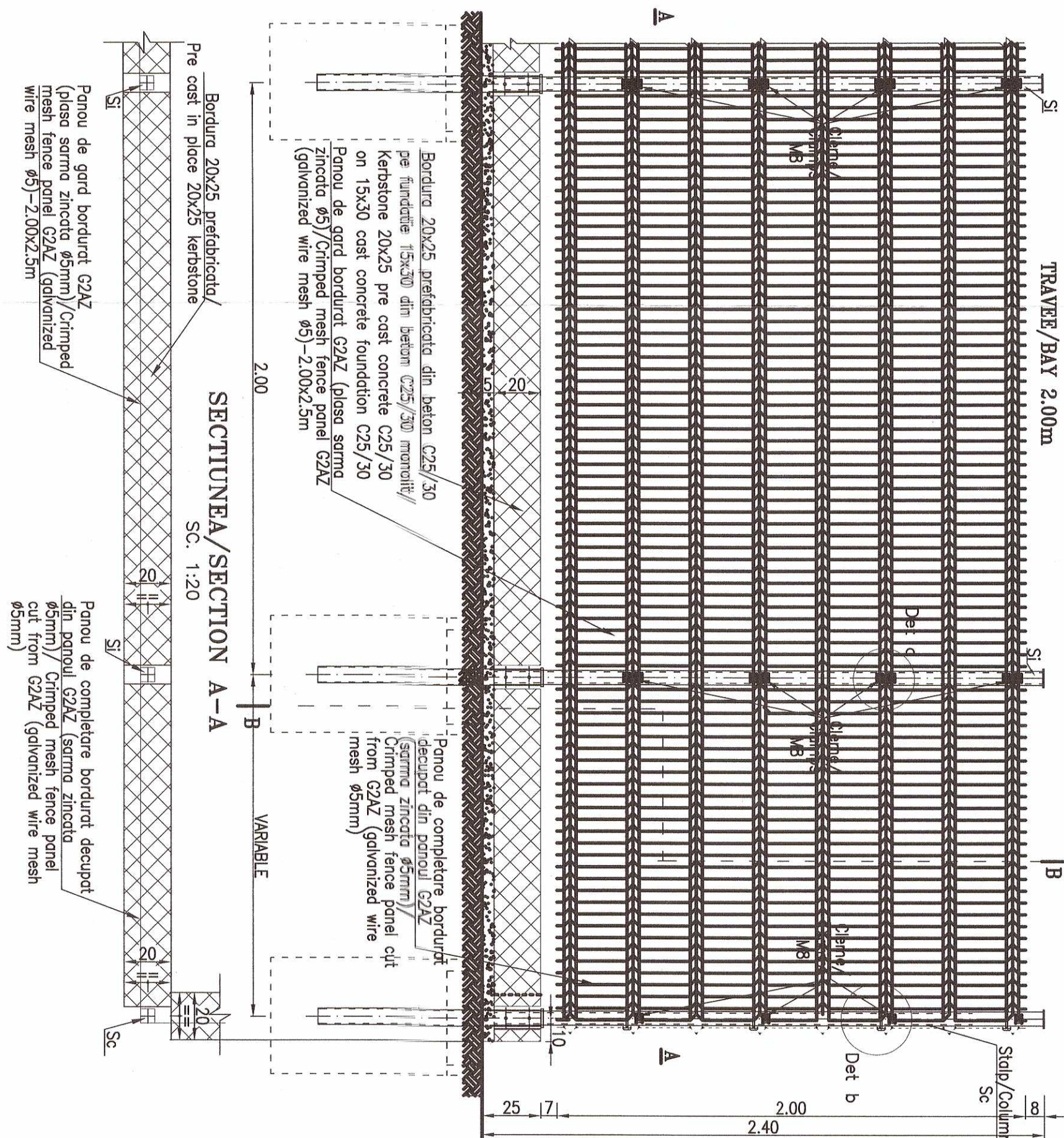
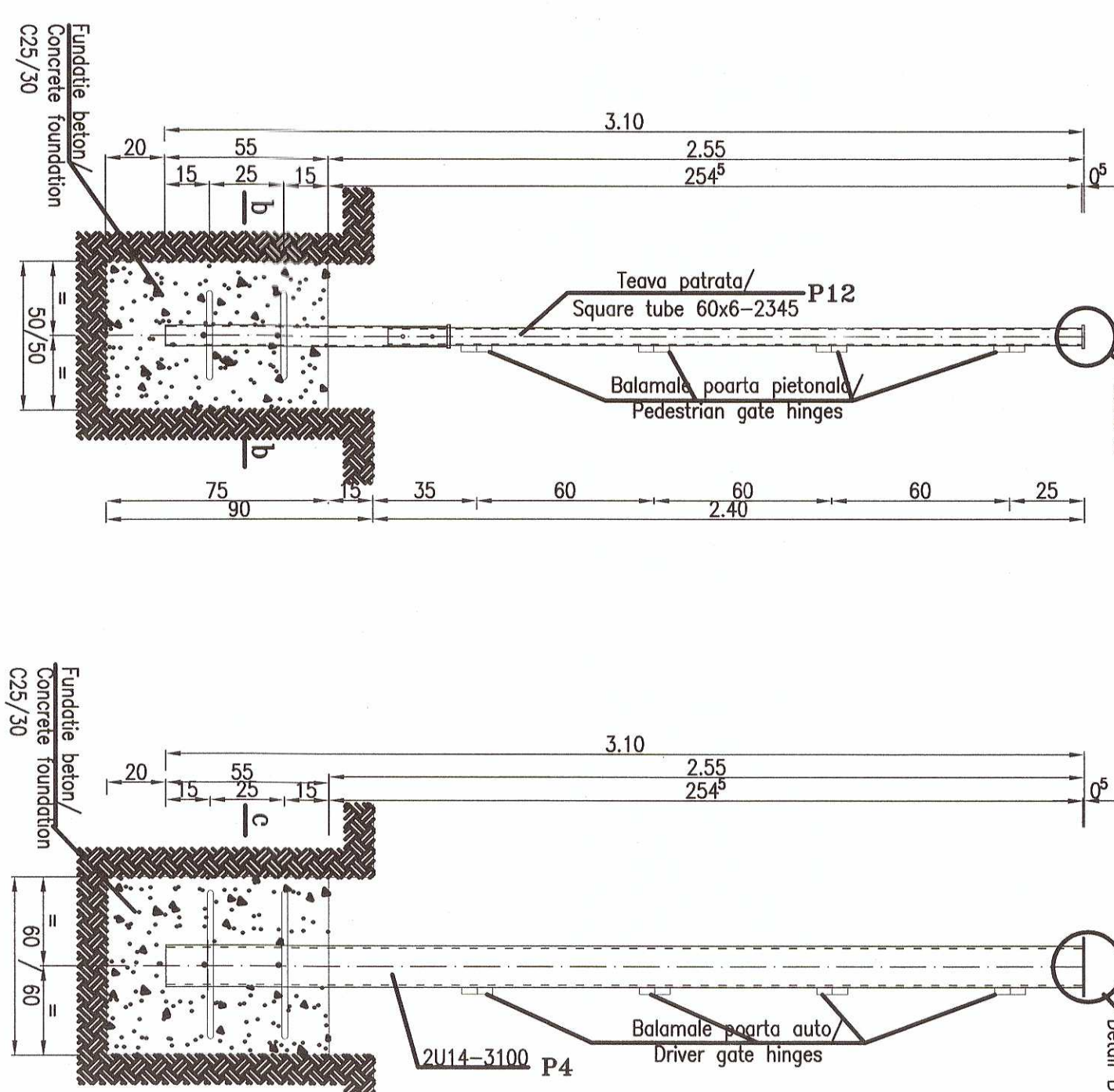
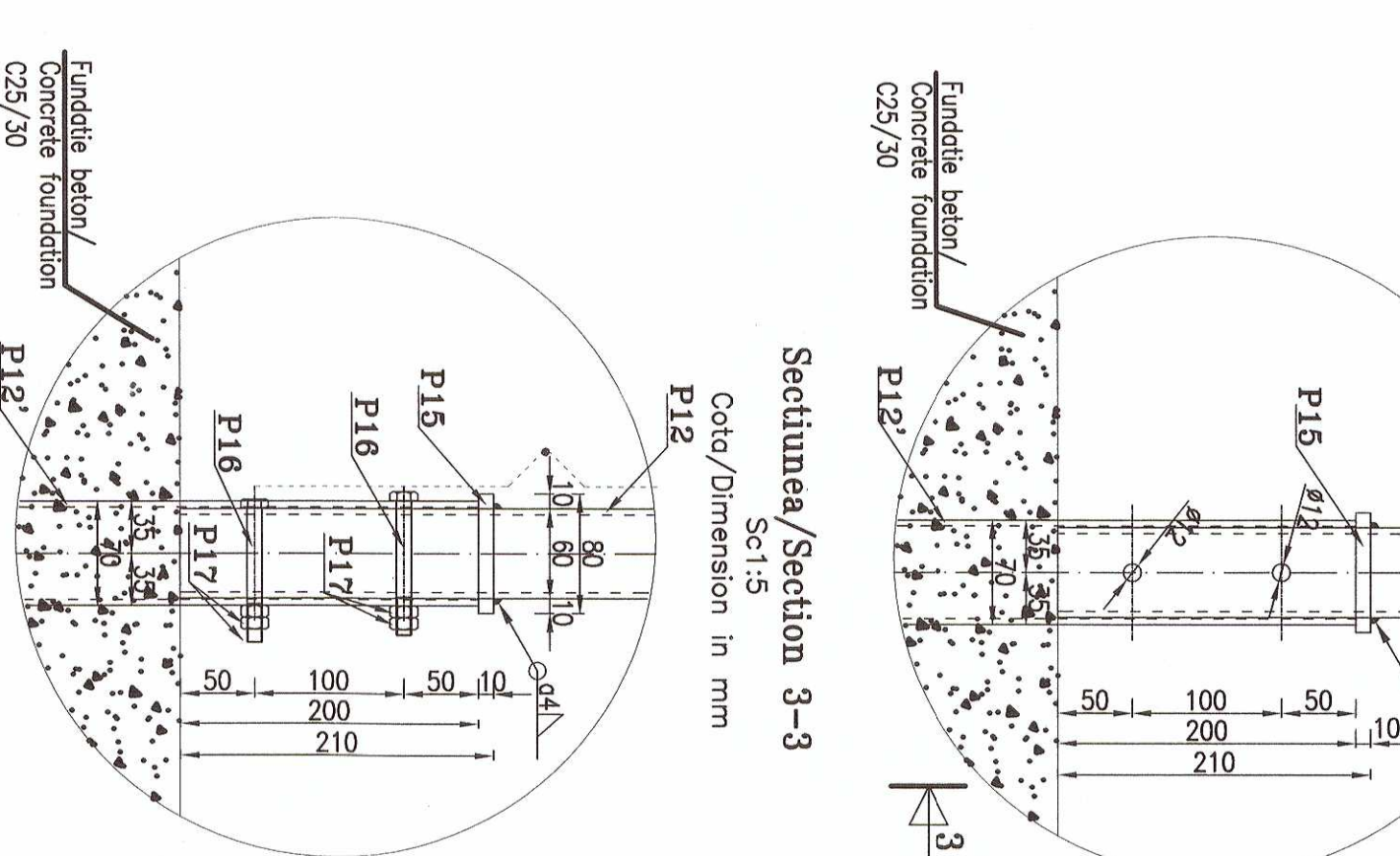
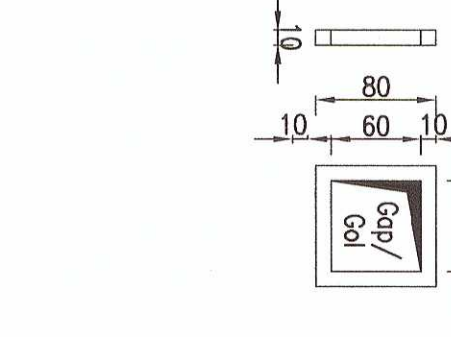
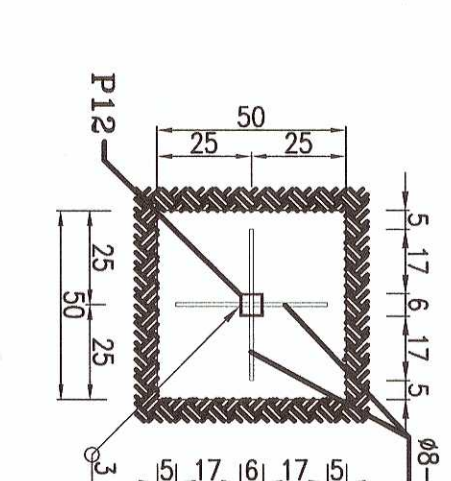
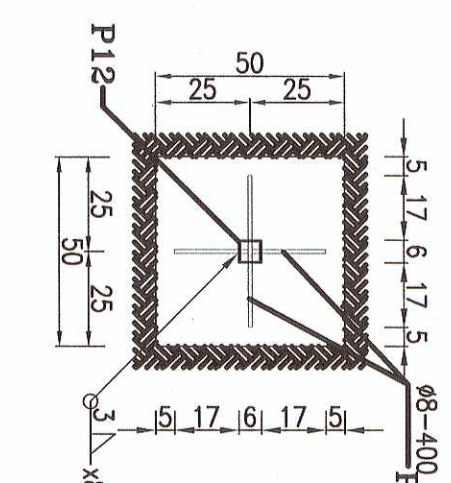
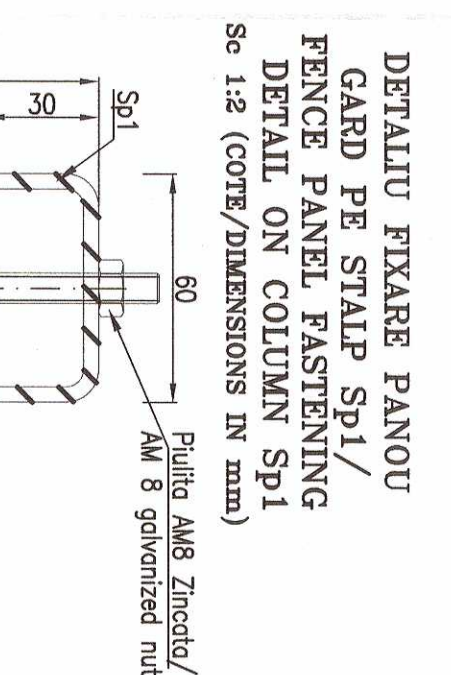
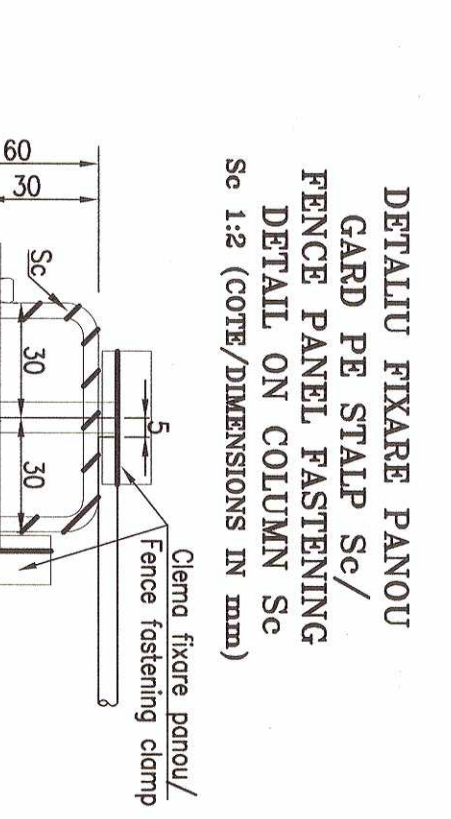
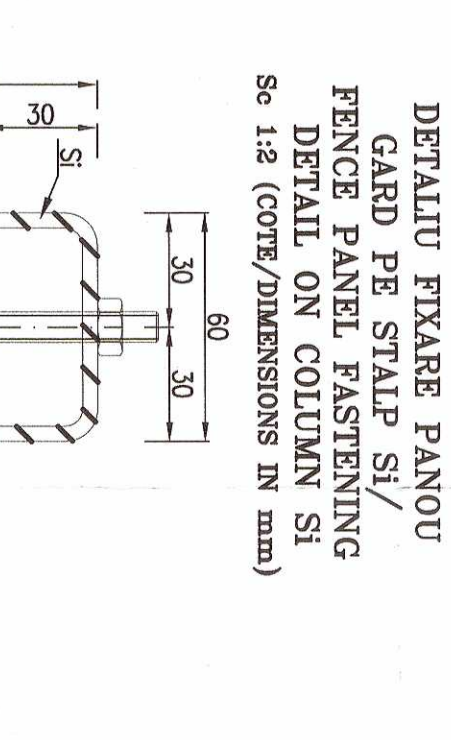
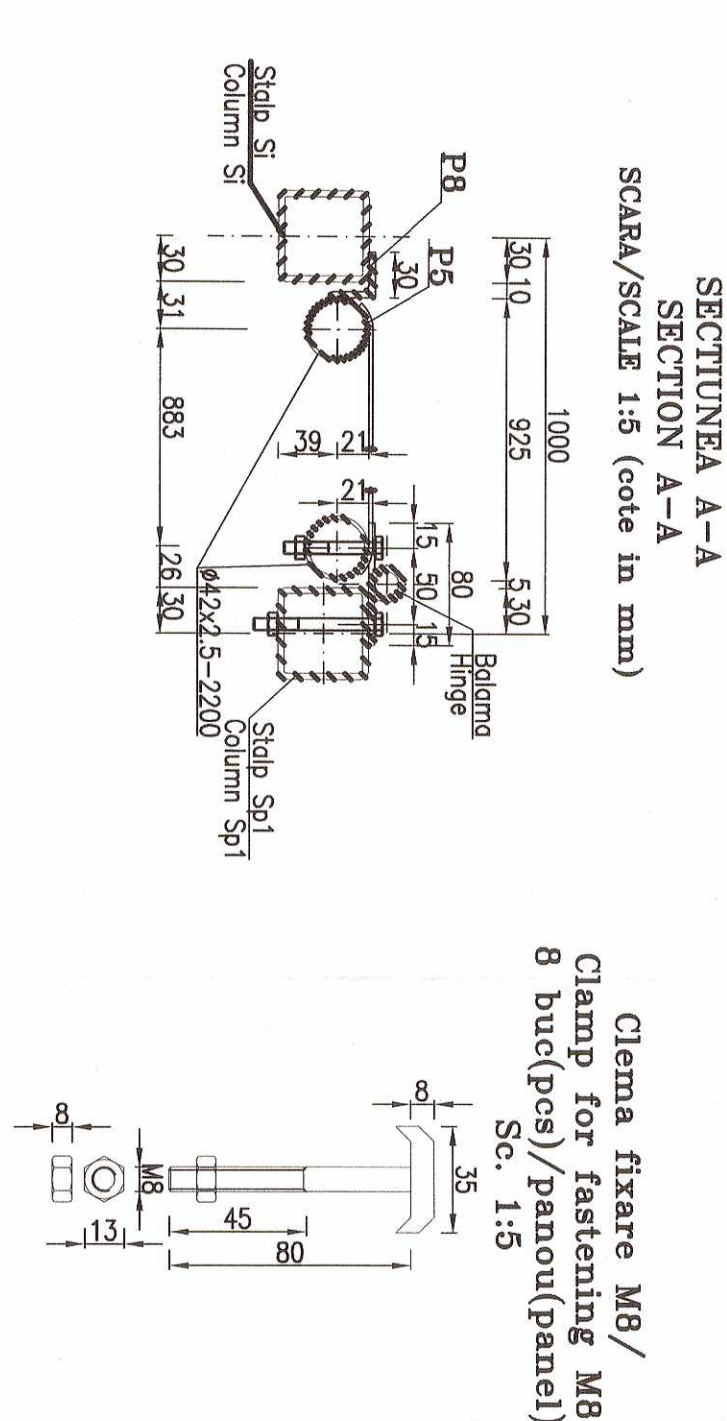
VEDERE LATERALA/SIDE VIEW
C. 1:30

TRAVEL/BAY COMPLETARE

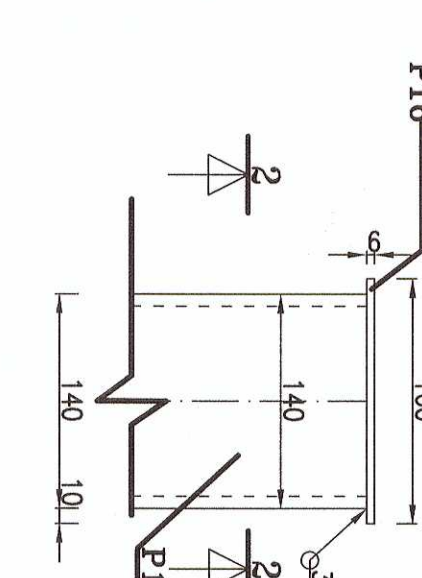
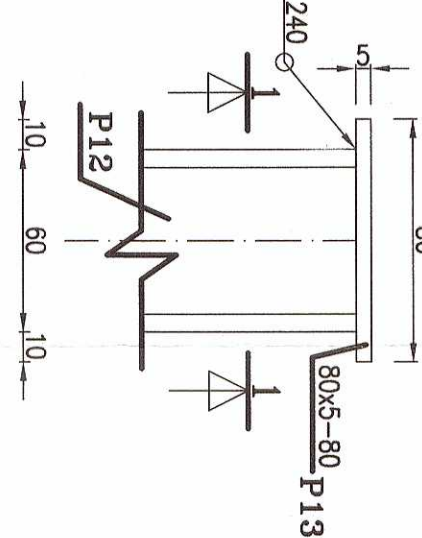
Stalp/Column Si (Sc)
Sc 1:20Stalp/Column Spacing
Sc 1:20Securine/Section 3-3
Sc1.5

CENTRALIZATOR CONECTII METALICE

ELEMENT	Mass/Weight [kg]		OBS.
	Nr. buc. No. buc.	Per buc./ Total	
Conduct. point/ gate leaf	1	28.20 / 28.20	
Bolometer/ Hinges	4	0.45 / 1.80	
Optical conduct./ leaf stopper	1	3.30 / 3.30	
TOTAL	1bucx33.30	kg/ buc	

EXTRAS DE LAMINATE /ROLLED BAR LIST

Element	Radius/ mm	Diameter/ mm	Volume/ mm ³	Weight/ g	Specific Weight/ g/cm ³
P1	100.00 ± 0.04	32.00 ± 0.10	1.01	0.19	0.18
P2	100.00 ± 0.04	32.00 ± 0.10	1.01	0.19	0.18
P3	100.00 ± 0.04	32.00 ± 0.10	1.01	0.01	0.01
P4	100.00 ± 0.04	32.00 ± 0.10	1.01	0.05	0.05
P5	100.00 ± 0.04	32.00 ± 0.10	1.01	0.25	0.25
P6	100.00 ± 0.04	32.00 ± 0.10	1.01	0.42	0.42
P7	100.00 ± 0.04	32.00 ± 0.10	1.01	1.12	1.12
P8	100.00 ± 0.04	32.00 ± 0.10	1.01	1.61	1.61
P9	100.00 ± 0.04	32.00 ± 0.10	1.01	1.56	1.56
P10	100.00 ± 0.04	32.00 ± 0.10	1.01	2.40	2.40
P11	100.00 ± 0.04	32.00 ± 0.10	1.01	9.80	9.80
P12	100.00 ± 0.04	32.00 ± 0.10	1.01	28.80	28.80
P13	100.00 ± 0.04	32.00 ± 0.10	1.01	3.12	3.12
P14	100.00 ± 0.04	32.00 ± 0.10	1.01	3.12	3.12
P15	100.00 ± 0.04	32.00 ± 0.10	1.01	3.12	3.12
P16	100.00 ± 0.04	32.00 ± 0.10	1.01	3.12	3.12
P17	100.00 ± 0.04	32.00 ± 0.10	1.01	3.12	3.12
P18	100.00 ± 0.04	32.00 ± 0.10	1.01	3.12	3.12
P19	100.00 ± 0.04	32.00 ± 0.10	1.01	3.12	3.12
P20	100.00 ± 0.04	32.00 ± 0.10	1.01	3.12	3.12
P21	100.00 ± 0.04	32.00 ± 0.10	1.01	3.12	3.12
P22	100.00 ± 0.04	32.00 ± 0.10	1.01	3.12	3.12
P23	100.00 ± 0.04	32.00 ± 0.10	1.01	3.12	3.12
P24	100.00 ± 0.04	32.00 ± 0.10	1.01	3.12	3.12
P25	100.00 ± 0.04	32.00 ± 0.10	1.01	3.12	3.12
P26	100.00 ± 0.04	32.00 ± 0.10	1.01	3.12	3.12
P27	100.00 ± 0.04	32.00 ± 0.10	1.01	3.12	3.12
P28	100.00 ± 0.04	32.00 ± 0.10	1.01	3.12	3.12
P29	100.00 ± 0.04	32.00 ± 0.10	1.01	3.12	3.12
P30	100.00 ± 0.04	32.00 ± 0.10	1.01	3.12	3.12
P31	100.00 ± 0.04	32.00 ± 0.10	1.01	3.12	3.12
P32	100.00 ± 0.04	32.00 ± 0.10	1.01	3.12	3.12
P33	100.00 ± 0.04	32.00 ± 0.10	1.01	3.12	3.12
P34	100.00 ± 0.04	32.00 ± 0.10	1.01	3.12	3.12
P35	100.00 ± 0.04	32.00 ± 0.10	1.01	3.12	3.12
P36	100.00 ± 0.04	32.00 ± 0.10	1.01	3.12	3.12
P37	100.00 ± 0.04	32.00 ± 0.10	1.01	3.12	3.12
P38	100.00 ± 0.04	32.00 ± 0.10	1.01	3.12	3.12
P39	100.00 ± 0.04	32.00 ± 0.10	1.01	3.12	3.12
P40	100.00 ± 0.04	32.00 ± 0.10	1.01	3.12	3.12
P41	100.00 ± 0.04	32.00 ± 0.10	1.01	3.12	3.12
P42	100.00 ± 0.04	32.00 ± 0.10	1.01	3.12	3.12
P43	100.00 ± 0.04	32.00 ± 0.10	1.01	3.12	3.12
P44	100.00 ± 0.04	32.00 ± 0.10	1.01	3.12	3.12
P45	100.00 ± 0.04	32.00 ± 0.10	1.01	3.12	3.12
P46	100.00 ± 0.04	32.00 ± 0.10	1.01	3.12	3.12
P47	100.00 ± 0.04	32.00 ± 0.10	1.01	3.12	3.12
P48	100.00 ± 0.04	32.00 ± 0.10	1.01	3.12	3.12
P49	100.00 ± 0.04	32.00 ± 0.10	1.01	3.12	3.12
P50	100.00 ± 0.04	32.00 ± 0.10	1.01	3.12	3.12
P51	100.00 ± 0.04	32.00 ± 0.10	1.01	3.12	3.12
P52	100.00 ± 0.04	32.00 ± 0.10	1.01	3.12	3.12
P53	100.00 ± 0.04	32.00 ± 0.10	1.01	3.12	3.12
P54	100.00 ± 0.04	32.00 ± 0.10	1.01	3.12	3.12
P55	100.00 ± 0.04	32.00 ± 0.10	1.01	3.12	3.12

Section/Section 1-1
Sc. 1:2.5
Cota/Dimension in mm

CENTRALIZATOR PANOURI/PANELS SUMMARY

SUBANSAMBU/ SUBSET	PUC P.O.S.	MASSA [Kg] PE BUC. PER PER.	466.7 TOTAL
Panou/ Penei 2.00m + 8 elem. (comp)	23	20.25	466.7
Panou/ Penei 1.88m + 8 elem. (comp)	1	19.14	19.14
Panou/ Penei 1.50m + 8 elem. (comp)	1	15.19	15.19
Panou/ Penei 1.17m + 8 elem. (comp)	1	11.35	11.35
Panou/ Penei 1.00m + 8 elem. (comp)	1	10.32	10.32
TOTAL			522.25 Kg

ATTENTION!! / ATTENTION!!

^{**}La intervalul de 1,50 m se vor executa descinderi cu lăţimea de 5 cm în bordura prefabricată, necesare evacuarii apelor meteorice din parc.

NOTA

[illegible]

NOTE

* Reinforcing panels and columns according to civil works layout.

* Chopped mesh fence panel made from galvanized wire with 200x2.50m dimensions, 6.25-30kg/m² panels are obtained by cutting from the main panel.

* The fence panels are fixed to the technical prescriptions from type class M8.

* At the execution one will follow the technical prescriptions from the following normatives:

EN 1090-1/-1997 Tensile reinforcement measurements. Field marking of civil, industrial and agro-industrial constructions.

* C 163-88 Normative for the execution of earthworks related to the realization of civil and industrial foundations.

* NE 012/-1-2007 Normative for concrete production and execution of concrete, reinforced concrete and prestressed concrete works – Part 1: Concrete production, EN 012/-2-2010 Normative for concrete production and execution of concrete, reinforced concrete and prestressed concrete works – Part 2: Execution of concrete structures.

* SRS 767/-88 Steel structures, General technical requirements for quality.

* The processing of parts and welded connections of steel structures classically as D category of acceptance according to normative C-150/-1999 Normative on the quality of welded connections.

* Welding connections are checked visually (100% as aspect and 100% as geometrical dimensions).

* Corrosion protection of steel structure degrading system for medium durability (M) 5-10-10 years and (corrosive class atmospheric) C3 according to GP-21-2013 and GP-2011-2004 mode (except face panels which are factory galvanized) with 1 coat of epoxy primer (80 µm thickness) + 2 layers of epoxy paint (2 x 80 µm thickness) in accordance with the technical prescriptions from the following normatives:

* Application of the primer is performed at machining on the surfaces prepared for.

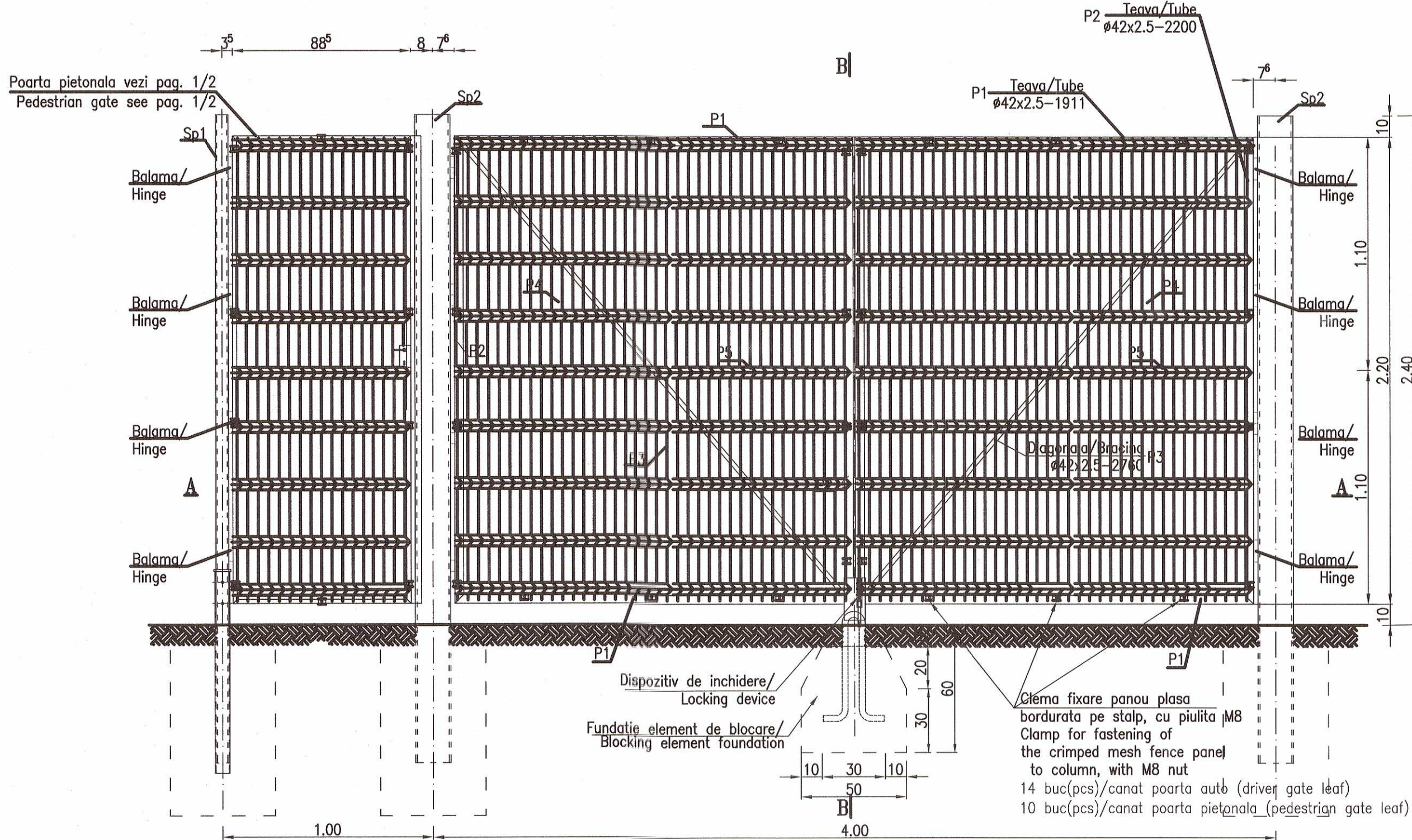
* For unspectrated flat welds, the thickness of weld seam "a" will be of 0.7 λ , where λ is the thickness of the thinnest element to be welded.

* The joints for fixing the columns and angles, to the columns, are made during assembly.

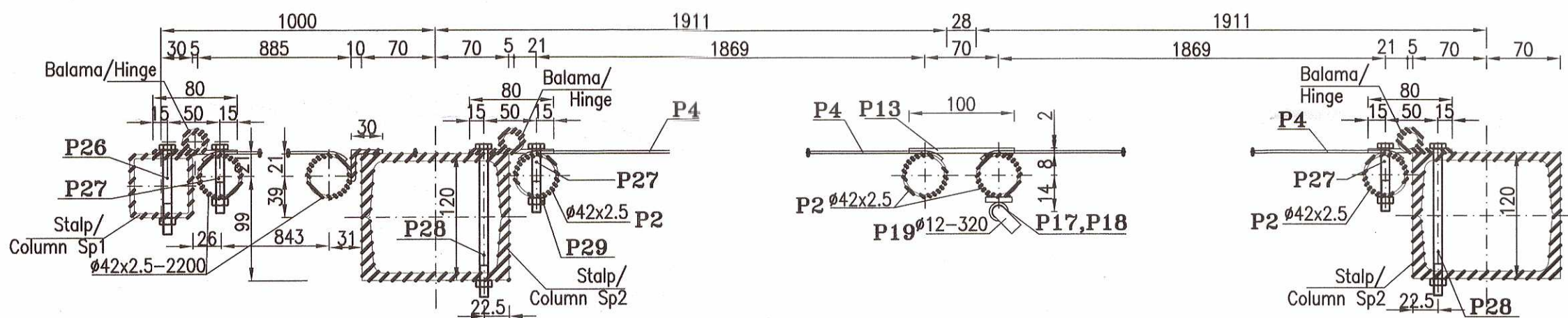
* The holes for position P12 and P12 for bolts are made at erection. The P15 neck is welded only on

POARTA ACCES PIETONAL/
PEDESTRIAN GATE
1.00m

ANSAMBLU PORTI/GATES ASSEMBLY
SC. 1:20
POARTA ACCES AUTO/DRIVER'S GATE 4.00m



SECTIUNEA/SECTION A-A PRIN PORTI/ THROUGH THE GATES
SCARA 1:5 (cote/dimensions in mm)



SITE CHARACTERISTICS

SEISMIC DESIGN AREA WITH: $a_g=0.35g$ and $T_c=0.7s$ ACC. TO P100-1/2013
CHARACTERISTIC LOAD AREA WITH SNOW ON GROUND 2.0 kN/mp
CONF. CODE CR1-1-3-2012
REFERENCE PRESSURE AREA OF 0.4 kPa ACC. TO CODE CR1-1-4-2012

CARACTERISTICI AMPLASAMENT

ZONA CALCUL SEISMIC CU: $a_g=0.35g$ si $T_c=0.7s$ CONF. P100-1/2013
ZONA INCARCARE CARACTERISTICA CU ZAPADA PE SOL 2.0 kN/mp
CONF. COD CR1-1-3-2012
ZONA PRESIUNE DE REFERINTA VANT 0.4 kPa CONF. COD CR1-1-4-2012

CARACTERISTICI FUNCTIONALE

CATEGORIA DE IMPORTANTA: D, CONFORM H.G. 766-97
CLASA DE IMPORTANTA: II, CONFORM P100-1/2013

FUNCTIONAL CHARACTERISTICS

IMPORTANCE CATEGORY: D ACCORDING TO H.G. 766-97
IMPORTANCE CLASS: III ACCORDING TO P100-1/2013

EXTRAS DE LAMINATE /ROLLED BAR LIST
(elemente porti/gate elements)

Element	Positie/ Position	Denumire/ Denomination	STAS/ STANDARD	Material	Dimensiuni/ Dimensions	Nr.buc. No.pcs.	Masa/Weight Kg
Canat poarta/ Gate leaf 4.00m	P1	Rama -leava/ Frame -tube	SR EN 10216/2-14	S235J2	#42x2.5-1911	2	4.57
	P2	Rama -leava/ Frame -tube	SR EN 10216/2-14	S235J2	#42x2.5-2200	2	5.61
	P3	Diagonala -leava/Bracing -tube	SR EN 10080-04	S235J2	#42x2.5-2760	1	7.04
	P4	Panou/Panel G2AZ	STNB #5	1869x1100		2	9.90
	P5	Rigidizare -leava/Stiffener -tube	STAS 530/1-87	S235J2	#32x2.5-1869	1	3.28
Balama/ Hinge	P6	Aripa balama -otel lat/ Hinge wing - flat steel	SR EN 10058/04	S235J2	60x4-110	1	0.20
	P7	Bolt -otel rotund/ Bolt -round steel	SR EN 10080-04	S235J2	#16-120	1	0.19
	P8	Saiba placa/Flat washer	SR EN ISO 7089-02	A16		1	0.01
	P9	Torus cu carlig -otel beton/ Picket with hook -reinforcing steel	STAS 438/1-2012	S235	#18-775	1	1.55
	P10	Ureche -otel lat/ Handle -flat steel	SR EN 10058/04	S235J2	60x5-80	1	0.19
Dispozitiv fixare canat poarta/ Gate leaf fastening device 4.00m	P11	Ancorare carlig -otel beton/ Hook anchorage -reinforcing steel	STAS 438/1-2012	S235	#18-1030	1	2.05
	P12	Surub blocare ancora/ Anchor blocking bolt	STAS 6404-88	gr.4.6	M4x15	1	0.006
	P13	Opriitor canat -otel lat/ Leaf stopper -flat steel	SR EN 10058/04	S235J2	100x8-2200	1	13.82
	P14	Clisma fixare panou plasa bordurata pe stalp, cu piuita M8 Clamp for fastening of the crimped mesh fence panel to column, with M8 nut					
	P15	Surub blocare bolt/ Locking bolt pin	STAS 6404-88	gr.4.6	M4x15	1	0.006

EXTRAS DE LAMINATE /ROLLED BAR LIST (elemente porti/gate elements)

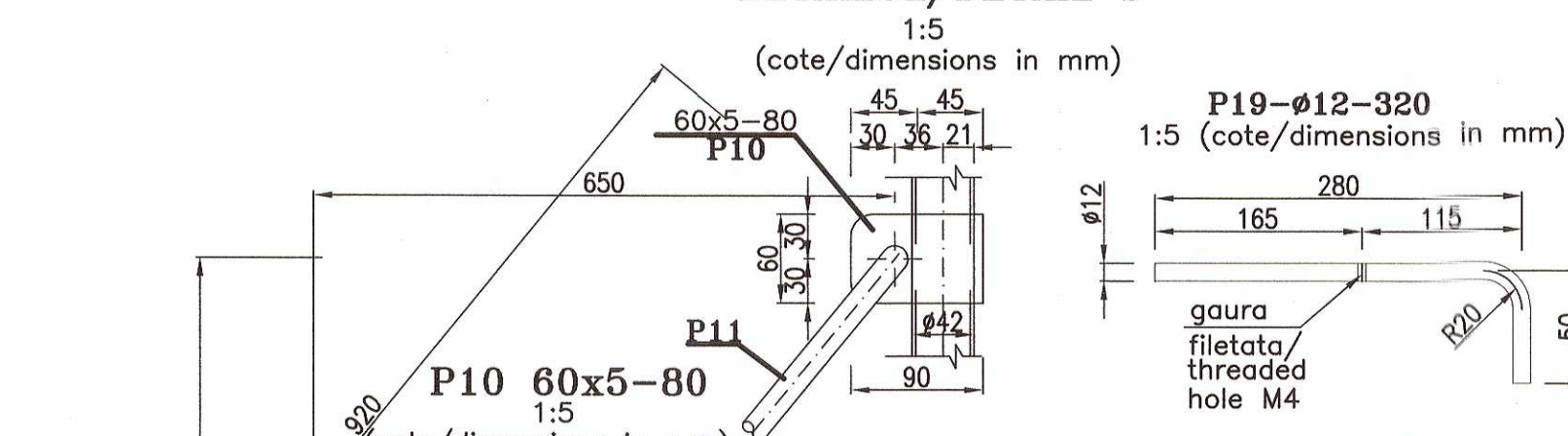
Element	Positie/ Position	Denumire/ Denomination	STAS/ STANDARD	Material	Dimensiuni/ Dimensions	Nr.buc. No.pcs.	Masa/Weight Kg
Dispozitiv inchidere cu zavor poarta/gate latch locking device 4.00m	P14	Element blocare otel beton Blocking element -reinforcing steel	SR 438/1-2012	S235	#28-1200	1	5.80
	P15	Element fixare zavor otel cornier Latch fixing element - angle	SR EN 10056/1-00	S235J2	L50x50x5-110	1	0.42
	P16	Placa suport zavor otel lat Latch base plate -flat steel	SR EN 10058-04	S235J2	25x5-140	1	0.20
	P17	Sleeve to fix the latch - tube	SR EN 10216/2-14	S235J2H	#18x2.5-70	1	0.04
	P18	Sleeve to guide the latch - tube	SR EN 10216/2-14	S235J2H	#18x2.5-30	1	0.02
Suruburi cu piuita fixare balamale/ Fastening bolts with nuts for hinges	P19	Bolt zavor otel beton Latch bolt - reinforcing steel	SR 438/1-2012	S255	#12-320	1	1.28
	P20	Surub blocare bolt/ Locking bolt pin	STAS 6404-88	gr.4.6	M4x15	1	0.006
	P21	Surub blocare bolt/ Locking bolt pin	STAS 6404-88	gr.4.6	M4x15	1	0.006
	P22	Surub/Bolt M8x80	grupa/grade 4.6 SR EN ISO 4017/2011	M8-80		8	0.035
	P23	Surub/Bolt M8x60	grupa/grade 4.6 SR EN ISO 4017/2011	M8-60		24	0.028

CENTRALIZATOR CONF. METALICE
STEEL STRUCTURES SUMMARY

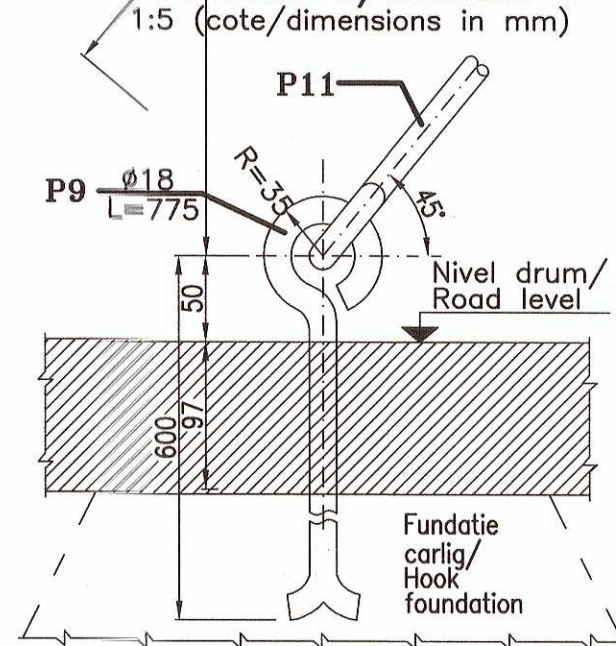
SUBANSAMBLU SUBSET	ELEMENT	Nr.buc. No.pcs.	Masa/Weight Kg
Poarta acces auto/Driver's gate 4.00m	Canat poarta/Gate leaf	2	51.60
	Balamale/ Hinges	8	0.45
	Dispozitiv fixare canat/ leaf fastening device	1	18.20
	Dispozitiv inchidere cu zavor/ latch locking device	1	7.00
	TOTAL	1buc(pcs)x132.00	kg
Suruburi si piuita fixare/ Fastening bolts and nuts	Surub/Bolt M8x80	8	0.035
	Surub/Bolt M8x60	24	0.028
	Surub/Bolt M8x140	16	0.058
	Piuita/Nut M8	48	0.006
	TOTAL	2.168	kg
Clisma fixare panou poarta/ Clamp fixing panel gate	Clisma cu piuita/ Clamp with M8 nut	38	0.12
	TOTAL	4.56	kg

BETON SIMPLU/PLAIN CONCRETE C25/30; XC4+XF3; CI 1,00;
Dmax 32; S3

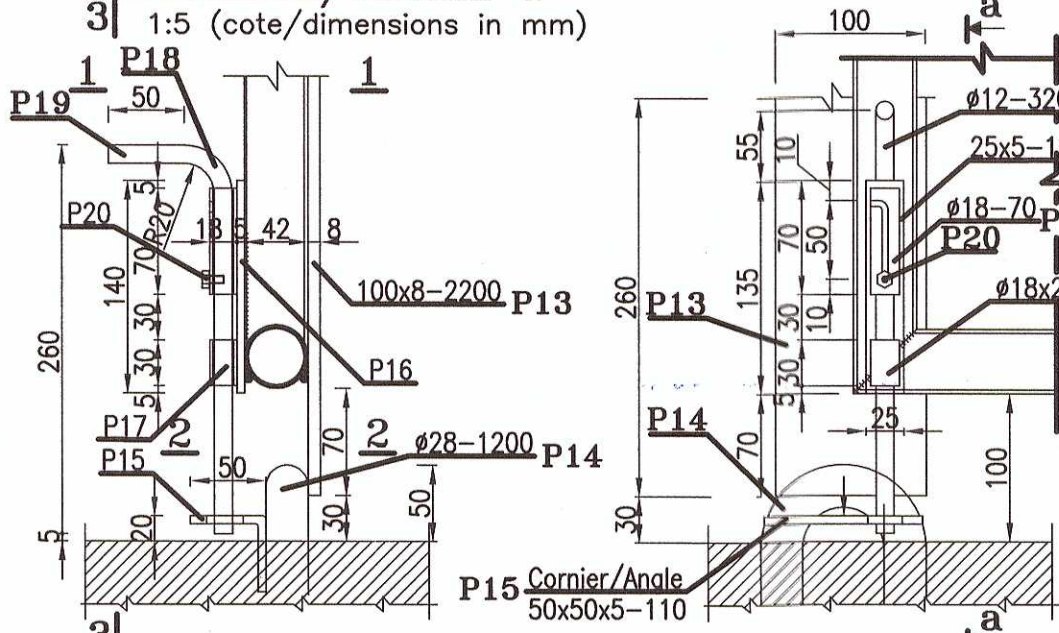
DETALIUL/DETAIL b



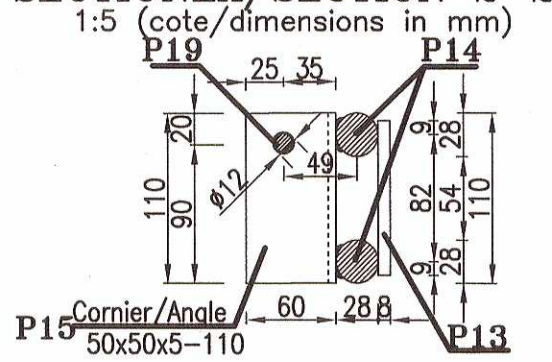
DETALIUL/DETAIL c



DETALIUL/DETAIL a

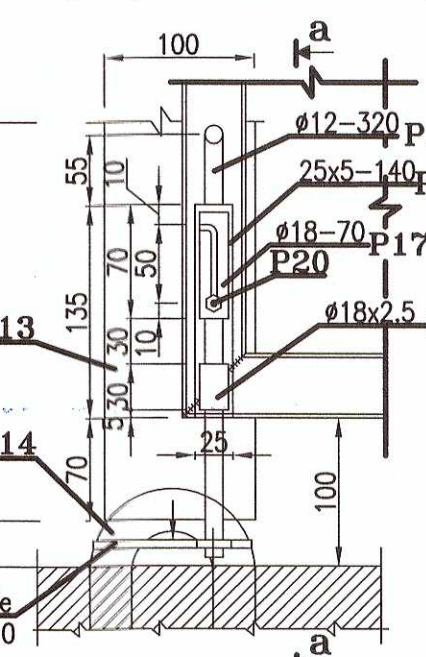


SECTIUNEA/SECTION 2-2



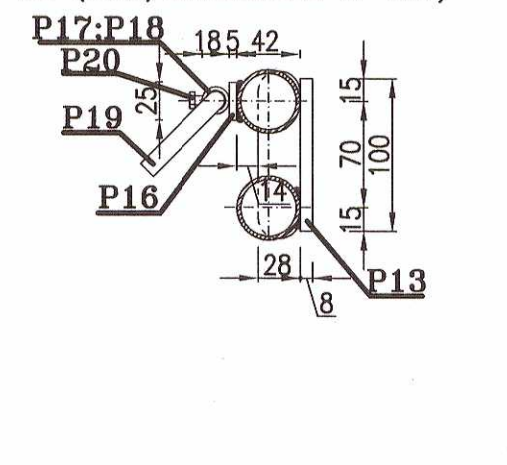
VEDERE/VIEW 3-3

1:5 (cote/dimensions in mm)



SECTIUNEA/SECTION 1-1

1:5 (cote/dimensions in mm)





NOTE

- * Positioning panels and columns according to plan civil site arrangement PR1193-CS01-01.
- * For the panels and columns see drawing PR1193-CS06-01 pag 1/2
- * Crimped mesh fence panel made from galvanized wire of G2AZ type with 2.00x2.50m dimensions;
- * The completing panels are obtained by cutting from the panel G2AZ;
- * The fence panels are fixed to the columns with galvanized T type clamps M8.
- * Steel structure of B category according to STAS 767/0-88.
- * The processing of parts and welded connections of steel structures classify as D category of acceptance according to normative C 150-1999 Normative on the quality of welded connections for civil, industrial and agricultural buildings. The processing and welding connections are checked visually (100% as aspect and 100% as geometrical dimensions).
- * Corrosion protection of steel structure deying system for medium durability (M) 5-10 years and corrosivity class (atmospheric) C3 (according to GP121-2013 and GP111-2004 made (except fence panels which are factory galvanised) with 1 coat of epoxy primer (80 µm thickness) + 2 layers of epoxy paint (2 x 80 µm thickness) in accordance with SR EN ISO 12944-5: 2008.
- * Application of the primer is performed at machining on the surfaces prepared for Sa 2.5-SR EN 8501-1: 2007.
- ***
- * The holes, for fixing the panels to the columns by the aid of M8 clamps, are made during assembly.

NOTA

- * Pozitionarea panourilor de gard si a stalpilor conform plan general amplasare PR1193-CS01-01.
- * Pentru panouri si stalpi vezi plan PR1193-CS06-01 pag 1/2.
- * Panourile de gard bordurate sunt din plasa de sarma zincata tip G2AZ 2.00x2.50;
- * Panourile de completare de se obtin prin decuparea din panou G2AZ;
- * Fixarea panourilor de gard si a celor pentru poarta auto si pietonala pe stalpi se face clemene zincate M8 de tip T.
- * Constructiile metalice se incadreaza in categoria B conform STAS 767/0-88.
- * Prelucrarea pieselor si imbinarea cu sudura la conectiile metalice se incadreaza in nivelul D de acceptare conform C 150-99 Normativ Privind Calitatea Imbinarilor Sudate Din Otel Ale Constructiilor Civile, Industriale Si Agricole si se verifica vizual (100% aspect si 100% dimensiuni geometrice).
- * Protectia anticoroziva cu sistem de vopsire a structurilor de otel pentru durabilitate medie(M) 5-10 ani si clasa de corozivitate (atmosferica) C3(conform GP121-2013 si GP111-2004 realizata (cu exceptia panourilor gard care sunt zincate din fabrica) cu grund epoxidic 1 strat (80 µm grosime)+ 2 straturi vopsea epoxidica(2*80 µm grosime) in conformitate cu SR EN ISO 12944-5: 2008.
- * Aplicarea grundului se face la uzina pe suprafetile pregatite pentru Sa 2.5-SR EN 8501-1: 2007.
- ***
- * Gaurile pentru fixarea panourilor cu clemene M8 de stalpi se executa la montaj.

DOMENIU DE VERIFICARE A2/ FIELD OF EXIGENCY A2
ACCORDING TO/CONFORM H.G.R. 925/95 AND/SI 742/2018

01	05.2022	EMIS PENTRU CONSTRUIRE	BADEA S.	SOARE L.	STAN C.	STAN C.
00	06.2021	EMIS PENTRU COMENTARII	BADEA S.	SOARE L.	STAN C.	STAN C.
REV. NR.	DATA	DESCRIERE	DESENAT	VERIFICAT	SEF PROIECT	APROBAT
SCARA:1:20		DATA PRIMEI EDITION			PROIECTANT	
Proiectant specialitatea arhitectura:						
IACOB DOREL BIA nr.026 / Pr.6-14.09.2021 / carh. lucrare						
CLIENT:			PROIECTANT:			
 CONPET S.A. STR. 1848, NR. 1 PLOIESTI, ROMANIA			 S.C. TEAM OIL S.R.L. STR. TRAIAN NR. 42 PLOIESTI, ROMANIA J29/695 din 22.08.2000			
DENUMIRE PROIECT:						
Modernizare statie de pompare a titeiului Slobozia – Jud. Prahova						
DENUMIRE PLAN:						
DESENE DETALII IMPREMIURE						
PROIECT NR.		FAZA	FORMAT	DESEN NR.	PAGINA NR.	REV. NR.
1193/2019		PT+DE	A1	Pr1193-CS06	2/2	01